

Sree Narayana College of Education

(Affiliated to MG University, Approved by NCTE)

Muvattupuzha, Ernakulam Dist, Kerala, Pin - 686661

Ph: 0485 2832040, 2836188, 8138072040

Email: sncemu@gmail.com, Web: www.sncem.edu.in



KEY INDICATOR

4.1 PHYSICAL FACILITIES

METRIC 4.1.1

The Institution has adequate facilities for Teaching- Learning. Viz., class rooms, laboratories, sports field, fitness centre, equipment, computing facilities, sports complex etc. for the various programme offered.


Geo-tagged Photographs




PRINCIPAL
Sree Narayana College of Education
Muvattupuzha

COMMON GROUND




PRINCIPAL
Sree Narayana College of Education
Muvattupuzha



PARKING AREA

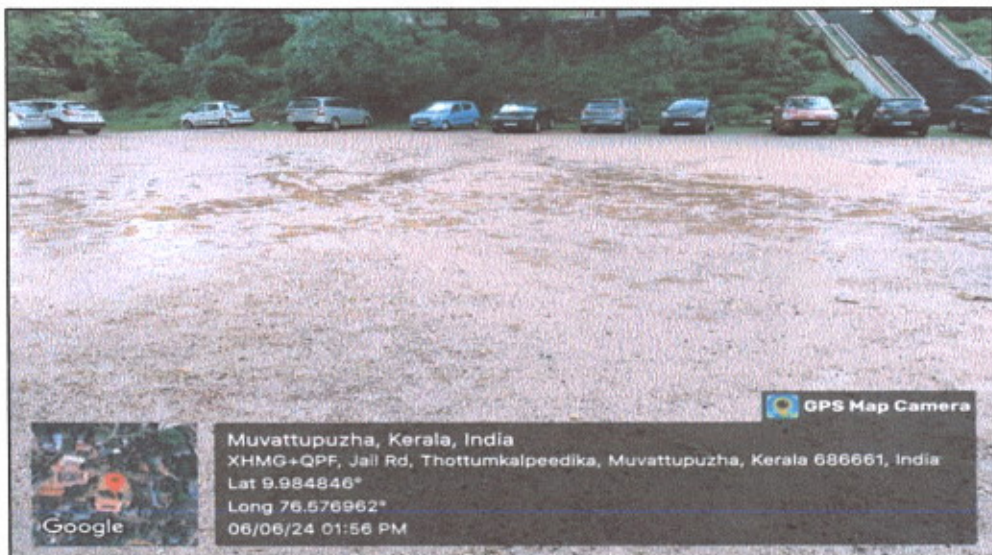


Mel

PRINCIPAL
Sree Narayana College of Education
Muvattupuzha



PARKING AREA



Parking area for four wheeler

meel
PRINCIPAL
Sree Narayana College of Education
Muvattupuzha



PARKING AREA



Parking area for two wheeler

PRINCIPAL
Sree Narayana College of Education
Muvattupuzha



PLAY GROUND



Playground of the college for sports and athletics

Shel
PRINCIPAL
Sree Narayana College of Education
Muvattupuzha



COLLEGE HOSTEL



S.N college hostel for women

Mee
PRINCIPAL
Sree Narayana College of Education
Muvattupuzha



SICK ROOM

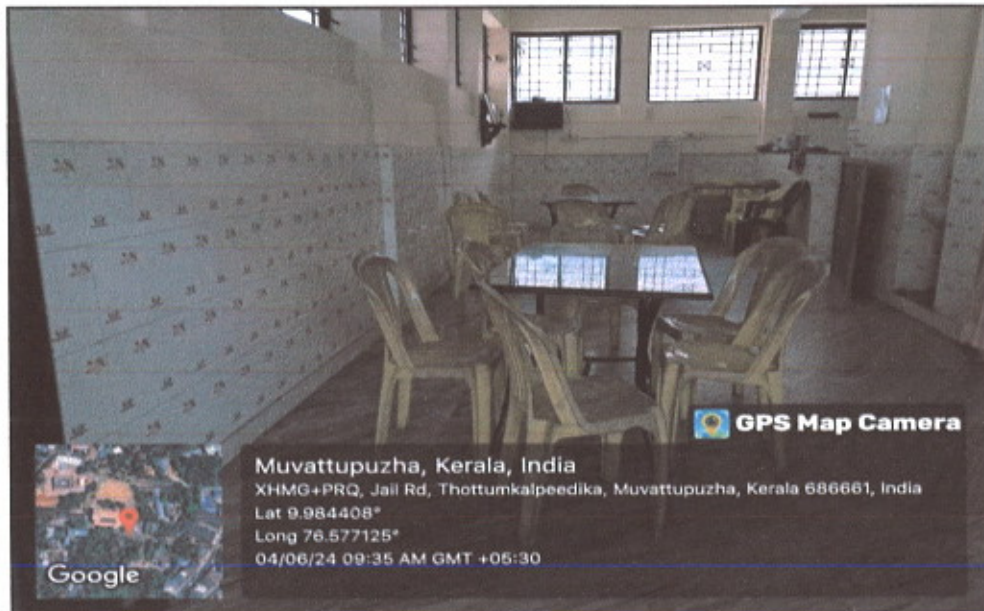
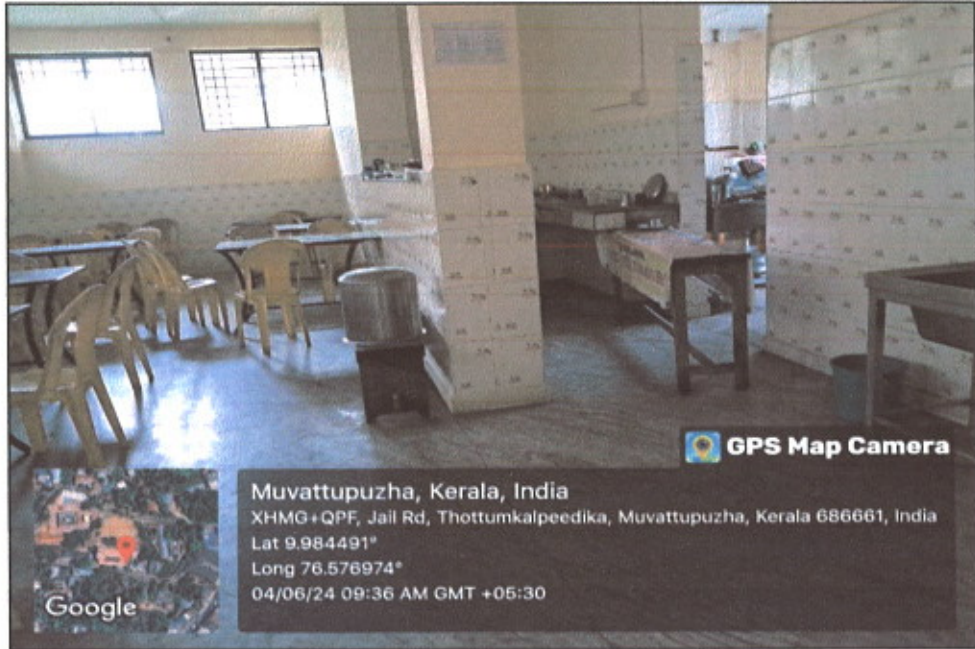


Sick room at the hostel



Shalee
PRINCIPAL
Sree Narayana College of Education
Muvattupuzha

CANTEEN

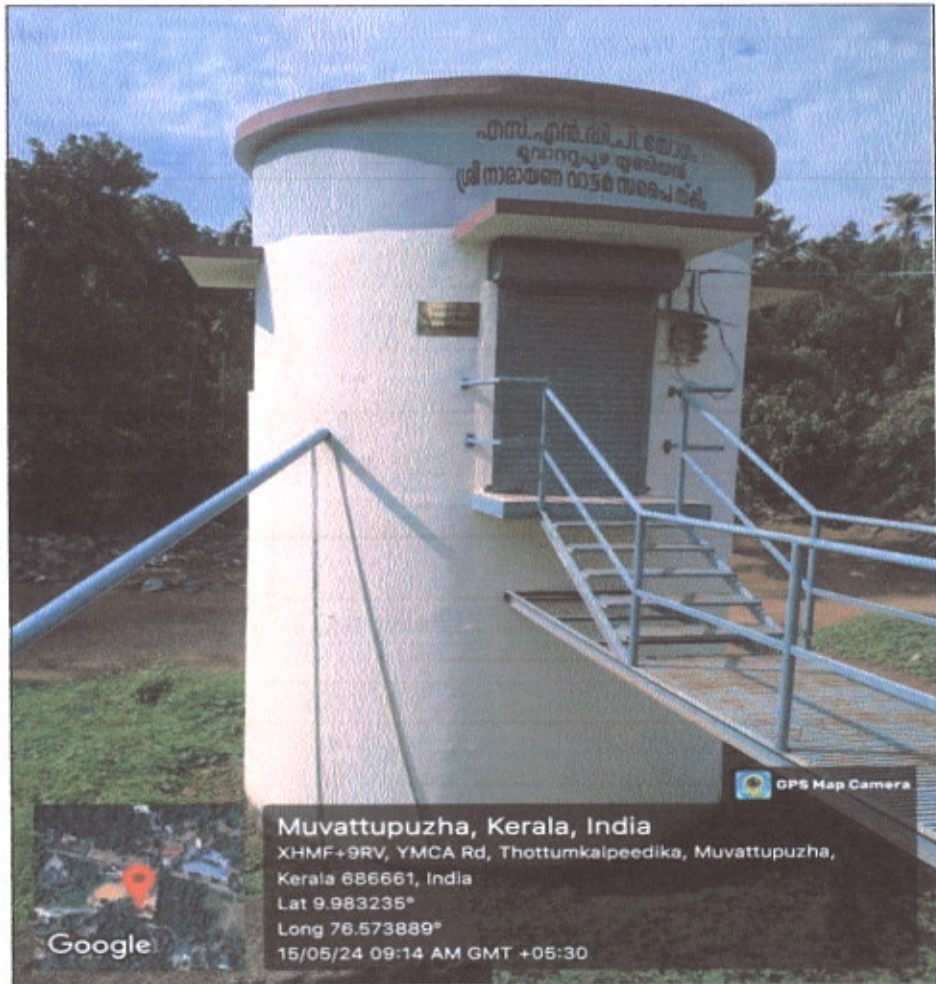


College canteen at the basement



Mee
PRINCIPAL
Sree Narayana College of Education
Muvattupuzha

WATER RESERVOIR

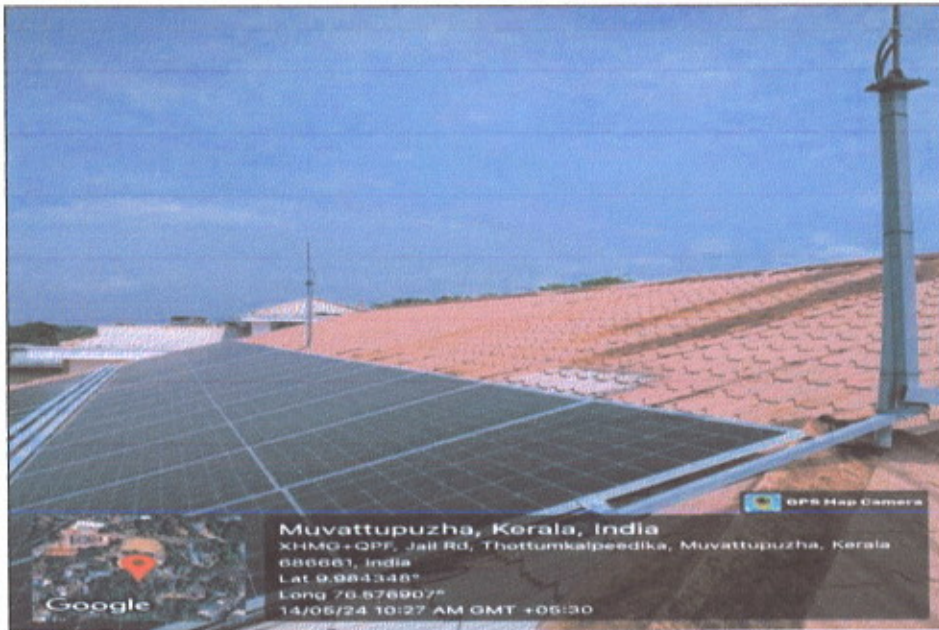


Mel

PRINCIPAL
Sree Narayana College of Education
Muvattupuzha



SOLAR PANEL



me

- PRINCIPAL
Sree Narayana College of Education
Muvattupuzha



BOREWELL



Installation and operation of the bore well comply with environmental regulations and do not harm local ecosystems



Shale
PRINCIPAL
Sree Narayana College of Education
Muvattupuzha

RAMP



Ramp at the entrance



Ramp in front of wash room at ground floor (214)

Mee
PRINCIPAL
Sree Narayana College of Education
Muvattupuzha